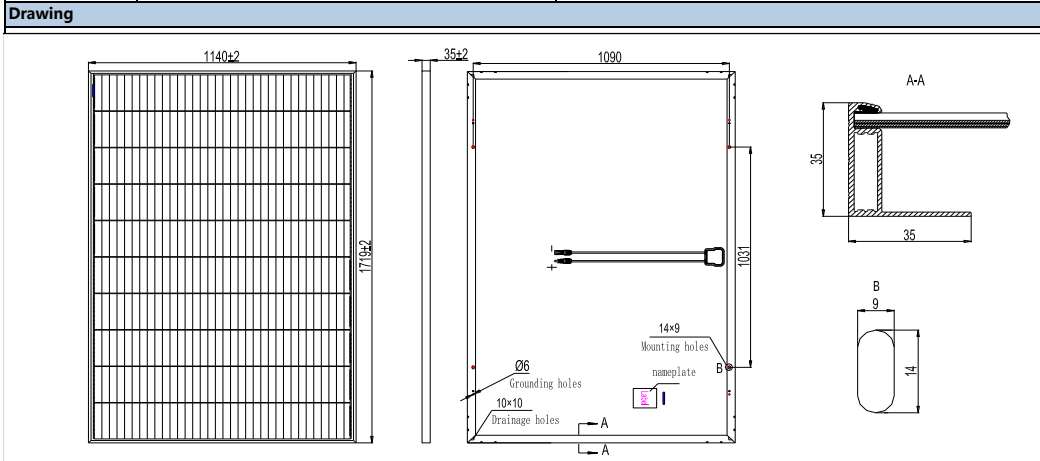


Specification of HiE-SxxxVG Monocrystalline shingled solar module

Electrical Characteristics at Standard Test Conditions(STC)							Temperature Characteristics	
Module Type:HiE-SxxxVG	410	405	400	395	390	385	NMOT	42.3°C (±2°C)
Maximum Power-Pm [W]	410	405	400	395	390	385	Temperature Coefficient of Voc	-0.27%/°C
Open Circuit Voltage-Voc [V]	46.6	46.5	46.4	46.3	46.3	46.2	Temperature Coefficient of Isc	0.04%/°C
Short Circuit Current-Isc [A]	11.07	11.02	10.97	10.92	10.87	10.82	Temperature Coefficient of Pm	-0.34%/°C
Maximum Power Voltage-Vm [V]	38.8	38.7	38.6	38.5	38.5	38.4	Maximum Ratings	
Maximum Power Current-Im [A]	10.57	10.47	10.36	10.26	10.13	10.03	Maximum System Voltage [V]	DC 1500(IEC)
Module Efficiency-η [%]	20.9	20.7	20.4	20.2	19.9	19.6	Series Fuse Rating [A]	20
Electrical Characteristics at NMOT							Maximum Surface Load Capacity [Pa]	5,400
Maximum Power-Pm [W]	309	305	301	297	294	290	Temperature Range [°C]	-40 to + 85
Open Circuit Voltage-Voc [V]	44.4	44.3	44.2	44.1	44.1	44.0	Withstanding Hail	Maximum diameter of 25 mm with impact speed of 23 m·s ⁻¹
Short Circuit Current-Isc [A]	8.93	8.89	8.85	8.81	8.77	8.73	Other Characteristics	
Maximum Power Voltage-Vm [V]	37.0	36.9	36.8	36.7	36.7	36.6	Packaging	31 pcs/box;806pcs/40/container;1240pcs/flat car
Maximum Power Current-Im [A]	8.35	8.27	8.18	8.10	8.00	7.92	Warranty	25 year Product Workmanship Warranty 25 year Linear Power Warranty
Note: 1. Standard Test Conditions [STC]: irradiance 1000 W/m ² ; AM 1.5 ; ambient temperature 25°C according to EN 60904-3; 2. Nominal Module Operating Temperature (NMOT): Irradiance 800W/ m ² ; wind speed 1m/s , ambient temperature 20°C. 3. Tolerance of Pm: 0→+5W, Measuring uncertainty of power: ±3%. Performance deviation of Voc [V], Isc [A], Vm [V] and Im [A]: ±3%.								
Mechanical Characteristics							I-V curve	
Dimensions	1719×1140×35mm (L×W×H)							
Weight	22kg							
Front Glass	White toughened safety glass, 3.2mm							
Encapsulation	EVA							
Cells	PERC Mono-crystalline 166×166mm							
Back Sheet	high weatherability blacksheet							
Frame	Anodized aluminum profile							
Junction Box	Rated current:20A, IP67, TUV&UL							
Cable	Length 1000mm, 1×4mm ²							
Connector	Zhejiang Renhe Photovoltaic Technology Co., Ltd./05-8 Staubli Electrical Connectors AG/ PV-KST4-EVO 2xy_UR(male); PV-KBT4-EVO 2xy_UR(female)							



Declaration:With the technical progress and product updates,there exists a deviation between the technical parameter of the HYUNDAI ENERGY SOLUTIONS's future products and the technical parameter in this specification,The HYUNDAI ENERGY SOLUTIONS Solar reserves the right to adjust the technical parameter at any time without notifying the customers, HYUNDAI ENERGY SOLUTIONS reserves the final right of interpretation.