



FRONIUS SMART METER UL

/ The bidirectional meter for recording power consumption in the home
 / Now suitable for 2-phase/SWER line systems



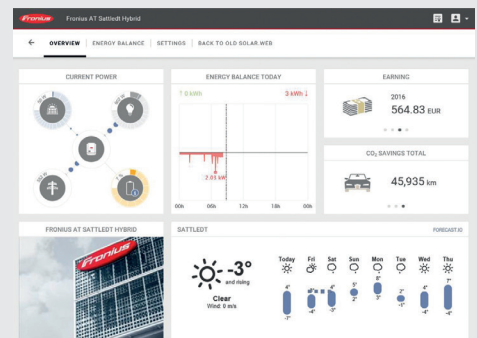
/ The Fronius Smart Meter UL is a bidirectional meter which optimises self-consumption and records the household's load curve. Thanks to highly accurate measurements and rapid communication via the Modbus RTU interface, dynamic feed-in control when feed-in limits are imposed is faster and more accurate than with the S0 meter. Together with Fronius Solar.web, the Fronius Smart Meter UL presents a clear overview of power consumption within the home. In the Fronius storage solutions, the Fronius Smart Meter UL provides perfectly coordinated management of the various energy flows and optimises overall energy management. The Fronius Smart Meter UL now has the additional capability to measure 2-phase/ SWER line systems and control multiple inverters on both phases. The Fronius Smart Meter UL is ideally suited for use with the Fronius SnapINverters and the Fronius Datamanager 2.0.

FRONIUS SMART METER

TECHNICAL DATA	FRONIUS SMART METER 240 V-3 UL	FRONIUS SMART METER 480 V-3 UL
Operating Voltage Range (Line to Line)	166 V – 276 V	384 V – 552 V
Power Line Frequency Range	50 Hz to 60Hz	
Connectors	Euroblock style pluggable terminal blocks (12 AWG / 2,5 mm ²)	
Power Consumption	1,2 W (60 Hz) / 1,5 W (50 Hz)	1,2 W (60 Hz) / 1,6 W (50 Hz)
Maximum Rated Apparent Power	4 VA	3 VA
Accuracy	± 0,5 % (see manual for details)	
Mounting	Indoor: Wall-mounted Outdoor: If mounted inside an electrical enclosure that is rated NEMA 3R or 4 / IP 66	
Temperature Range	-30°C to +55°C	
Weight	310 g	
Dimensions (Height x Width x Depth)	38 x 143 x 85 mm	
Interface to Inverter	Modbus RTU (RS 485)	
Certifications / Listings	UL 61010-1, CAN/CSA-C22.2 No. 61010-1-04, IEC 61010-1, EN 61326: 2002, EN61000-4-2, EN61000-4-3, EN 61000-4-4, EN 61000-4-5, EN 61000-4-6, EN 61000-4-11, FCC Part 15 Class B, EN 55022: 1994 Class B	
Current Transformers (voltage output)	Primary: 1 – 3000 A / secondary: use only CT's with voltage output 333 mV	
Supported Grid Types	1-phase 3-wire (split-phase), 1-phase 2-wire without N, 3-phase 4-wire (WYE), 3-phase 3-wire without N (Delta), 3-phase 4-wire delta (High-leg delta / stinger grid)	
Power supply	Self-supplied, No external power supply required	

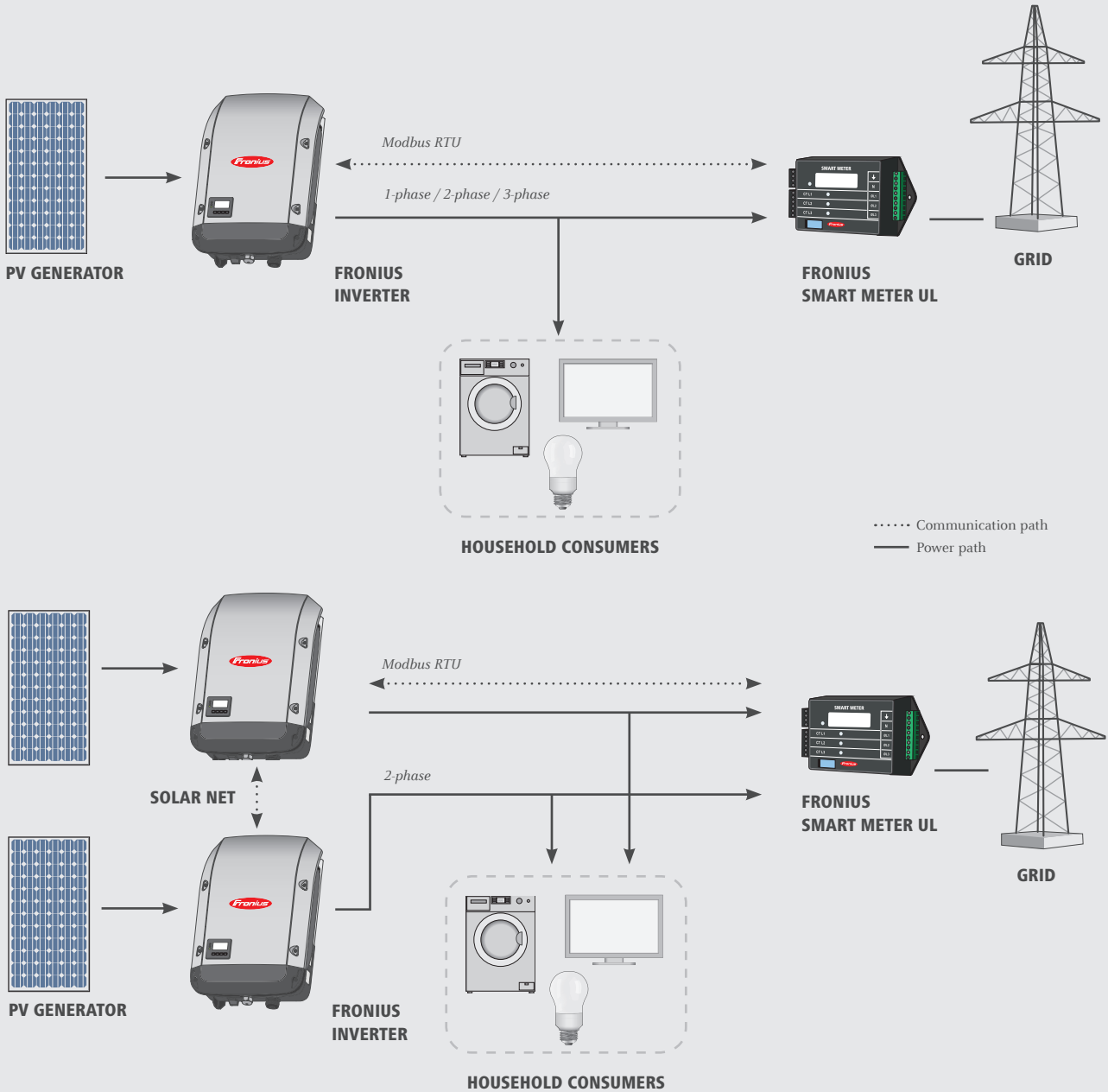
THE ADVANTAGES AT A GLANCE

- / Fast and accurate dynamic feed-in control for multiple inverters
- / Clear overview of power consumption in Fronius Solar.web
- / Optimised energy management with the Fronius storage solutions
- / Capable of measuring 2-phase systems



Please note: Product picture may vary slightly from actual product.

CONFIGURATION DIAGRAM



/ The Fronius Smart Meter UL works in conjunction with the Fronius Datamanager 2.0 via the RS485 interface (Modbus RTU) on the Fronius IG Plus inverters. The Fronius Smart Meter UL can be retrofitted at any time together with the Fronius Datamanager 2.0 on all Fronius inverters.

/ Perfect Welding / Solar Energy / Perfect Charging

WE HAVE THREE DIVISIONS AND ONE PASSION: SHIFTING THE LIMITS OF POSSIBILITY.

/ Whether welding technology, photovoltaics or battery charging technology – our goal is clearly defined: to be the innovation leader. With around 3,800 employees worldwide, we shift the limits of what's possible - our record of over 1,200 granted patents is testimony to this. While others progress step by step, we innovate in leaps and bounds. Just as we've always done. The responsible use of our resources forms the basis of our corporate policy.

Further information about all Fronius products and our global sales partners and representatives can be found at www.fronius.com

v07 Apr 2017 EN

Fronius Australia Pty Ltd.
90-92 Lambeck Drive
Tullamarine VIC 3043
Australia
pv-sales-australia@fronius.com
www.fronius.com.au