

WARRANTY

Arlec guarantees this product in accordance with the Australian Consumer Law and all other applicable Australian and New Zealand laws that are unable to be excluded. Arlec also warrants to the original first purchaser of this product (you) from a retailer with which this document is given that this product will be free of defects in materials and workmanship for a period of 12 months from the date of purchase; provided the product is not used or installed other than for the purpose, or in a manner not within the scope of the recommendations and limitations, specified by Arlec, is new and not damaged at the time of purchase, has been properly installed by a licensed electrician or contractor who is licensed to install electrical products in the place in which the product was installed and in accordance with Arlec's installation instructions, has been maintained in accordance with the recommendations specified by Arlec, has not been subjected to abuse, misuse, neglect or damage, has not been modified or repaired without the approval of Arlec and has not been used for, or installed in premises which are used for, commercial purposes (Warranty).

If you wish to claim on the Warranty, you must, at your own expense, return the product or that part of the product which you believe is defective in materials and workmanship, and provide proof of original purchase, your name, address and telephone number and a certificate of installation or other document required by law for the installation of electrical products in the place in which the product was installed issued by the licensed electrician or contractor who installed the product, to Arlec at the address below within 12 months from the date of purchase. Please note that the Warranty does not cover removal or re-installation of the product or that part of the product which you believe is defective.

DETA
TRANSFORMING ELECTRICAL

Arlec Australia Pty. Ltd. ACN 009 322 105 gives the Warranty for goods purchased from a retailer in Australia by you and Arlec New Zealand Limited NZBN 9429030738294 gives the Warranty for goods purchased from a retailer in New Zealand by you (collectively Arlec).

Arlec's telephone number, address and email address for purposes of giving the Warranty are:

Telephone Number: 1800 826 859 (in Australia)

0800 003 329 (in New Zealand)

Street Address: Caribbean Park, 36 Lakeview Drive
Scoresby, VIC 3179, Australia

Postal Address: PO Box 2596, Rowville, VIC 3178, Australia

Email: cs@arlec.com.au

Arlec will assess any claim you may make on the Warranty in the above manner and if, in Arlec's reasonable opinion, the Warranty applies, Arlec will at its own option and expense replace the product (or part of the product) with the same or similar product (or part of the product) or repair the product (or part of the product) and return it to you or refund the price you paid for the product. Arlec will bear its own expenses of doing those things, and you must bear any other expenses of claiming on the Warranty.

For goods purchased in Australia (only):

The Warranty is in addition to other rights and remedies you may have under a law in relation to the product to which the Warranty relates.

Our goods come with guarantees that cannot be excluded under the Australian Consumer Law. You are entitled to a replacement or refund for a major failure and for compensation for any other reasonably foreseeable loss or damage. You are also entitled to have the goods repaired or replaced if the goods fail to be of acceptable quality and the failure does not amount to a major failure.

For goods purchased in New Zealand (only):

The Warranty is in addition to, and does not affect, other rights and remedies you may have under a law in relation to the product to which the Warranty relates.

Our goods may come with guarantees that can only be excluded under the New Zealand Consumer Guarantees Act 1993 to the extent you are acquiring the product for a business purpose and it would be fair and reasonable for Arlec to contract out of those guarantees.

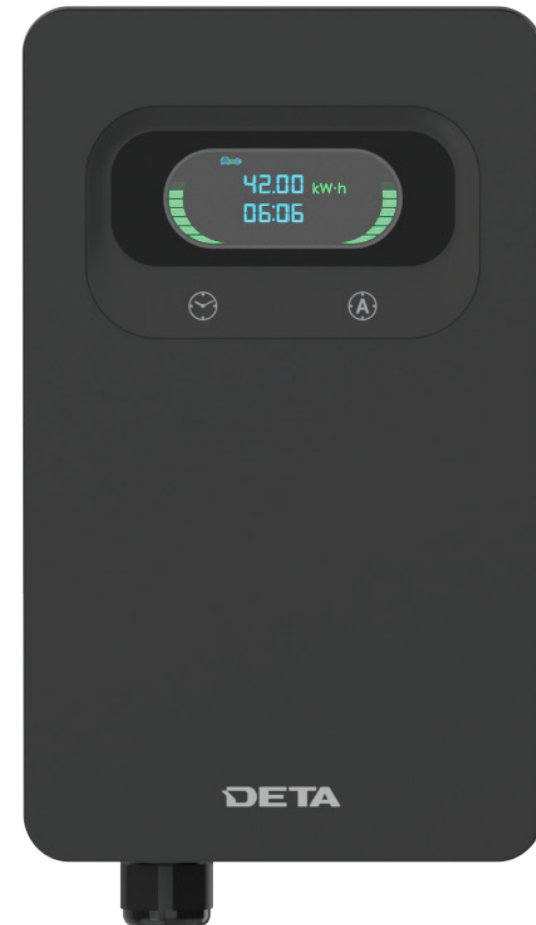
DETA
TRANSFORMING ELECTRICAL

USER MANUAL

DETA 7kW Single Phase Wall Mount

EV Charger

EVA200-7C



WARNING!

To reduce the risk of fire, electric shock, or personal injury, please read these instructions carefully before use and understand the instructions before using this DETA product.

KEEP THIS MANUAL IN A SAFE PLACE FOR FUTURE REFERENCE.

IMPORTANT SAFETY INSTRUCTIONS

WARNING: When using electric products, basic precautions should always be followed, including the following. This manual contains important instructions for this charger that shall be followed during installation, operation and maintenance of the unit.

WARNING: Installation and wiring should be done by personnel with professional qualification, otherwise, hazardous electric shock may result. Make sure input power supply is entirely disconnected before wiring.

WARNING: Risk of electric shock! Do not disconnect underload.

WARNING: This product is intended only for charging vehicles not requiring ventilation during charging.

WARNING: Strictly forbidden for children or person of restricted capacity to approach the charger to avoid injury

WARNING: Use of the product may affect or impair the operation of any medical or implantable electronic devices, such as an implantable cardiac pacemaker or an implantable cardioverter defibrillator. Check with your electronic device manufacturer concerning the effects that charging may have on such electronic devices before using the product.

WARNING: Do not expose to liquid, vapor or rain.

WARNING: Do not use this product if there is any damage to the unit.

WARNING: Risk of electric shock. Do not remove cover or attempt to open the enclosure when the device is powered on. No user serviceable parts inside. Refer to qualified service personnel.

WARNING: The product must be grounded through a permanent wiring system.

- Read all the instructions before using this product.
- Use supervision when operating this product around children.
- Do not put fingers into the electric vehicle socket.
- Do not use this product if the flexible power cord or your EV cable is frayed, has broken insulation or any other signs of damage.
- Do not use this product if the enclosure or the EV socket is broken, cracked, opened or shows any other indication of damage.
- To avoid a risk of fire or electric shock, do not use this device with an extension cord.
- Do not operate the product in temperatures outside its operating range of -30°C to +50°C
- Do not put inflammable, explosive or combustible materials, chemicals, combustible steam or other dangerous goods near the product.

- The electric vehicles can only be charged with the engine off and stationary. Do not start the engine when the charging handle is still connected.
- Do not touch the terminals or other current-carrying parts when your hands are wet.
- Installation work and electrical wiring must be done by qualified person(s) in accordance with all applicable codes and standards, including fire-rated construction.
- Take care not to drill into any pipes or power lines beneath the surface during mounting holes preparation. Use a power line / metal detector.
- Do not put any foreign objects into the enclosure.
- Do not use power generators as a power source for charging electric vehicles.
- Do not use the product when either you, the vehicle or the product is exposed to severe rain, snow, electrical storms or other inclement weather.
- Do not use or store the product in a recessed area or below the floor level

Residual Current Breaker with Over-current protection (RCBO)

Certified RCBO shall be installed upstream close the charging station by authorized local agent, according to the user manual and instruction guide.

EV CHARGING CABLE SOLD SEPARATELY

RECOMMENDED TO USE WITH DETA EV CHARGING CABLE MODELS.

- DEV200E-32C1P5
- DEV200E-16C3P5
- DEV200E-32C3P5
- DEV200E-32C3P7

SPECIFICATIONS

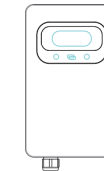
Charging power	7.4kw
Rated voltage	230-240V~ 50/60Hz Single phase
Rated current	32A max
Socket/cable	Type 2 socket, Case B connection (untethered)
Charging control	Buttons on charger
Display screen	LCD screen
Communication protocol	OCP1.6J
Safety protection	Over-current protection/ Over-voltage protection/ Under-voltage protection/ Current leakage protection/ Faulty ground protection
Residual current protection	30mA Type A + 6mA DC
Altitude	2000m
Storage temperature	-40~75°C
Operation temperature	-30~50°C
Relative humidity	95%RH, No water droplet condensation
IP Rating	IP55
Installation location	Indoor/outdoor
Product size	H 330mm x W 187mm x D 122mm
Product net weight	1.85kg
Mounting	Wall-mounted or pole-mounted

INSTALLATION

Included Mounting Parts and Required Tools

COMPONENTS

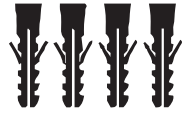
Make sure that all parts are delivered according to the order. Check the packaging for the following parts.



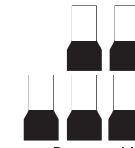
EV charger



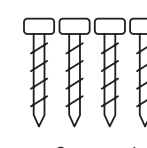
User Manual



Wall anchors x 4
(Φ8 x 45-60 mm)



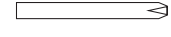
Power cable terminal x 5



Screws x 4
(Φ5 x45 mm)



Plastic pry tool



Hex screwdriver bit

REQUIRED TOOLS



Measuring tape



Electric drill



Hammer



Slotted screwdriver



Phillips head screwdriver



Wire Stripper



Crimp tool



Utility Knife



Φ8mm
Drill bit



1-1/8 in.
(35mm)
Step drill bit



Step Bit,
1-1/8in
(29mm)

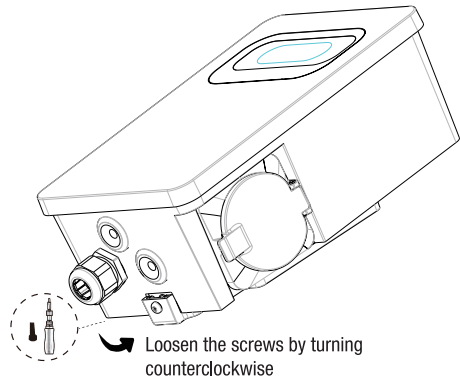


Step Bit,
1-1/8in
(35mm)

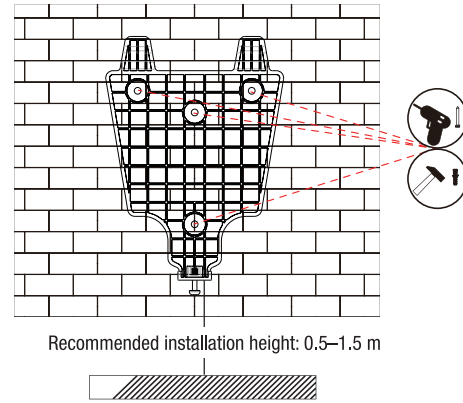
INSTALLATION STEPS

Warning: The tasks described in this section may only be carried out by a qualified electrician

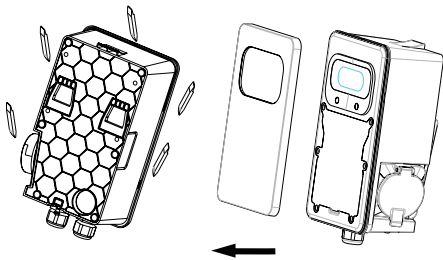
1. Unscrew the bracket from the back



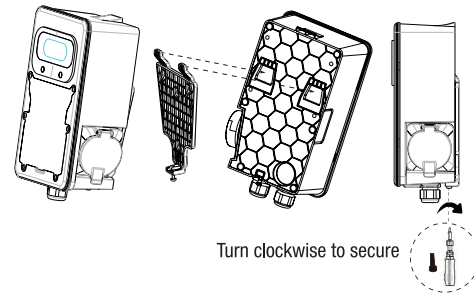
2. Secure the bracket onto the wall



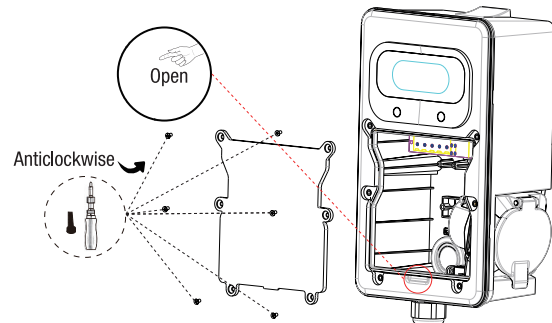
3. Remove the front cover with a suitable tool (e.g., plastic pry tool)



4. Mount the main unit onto the bracket, then tighten the bottom screw.

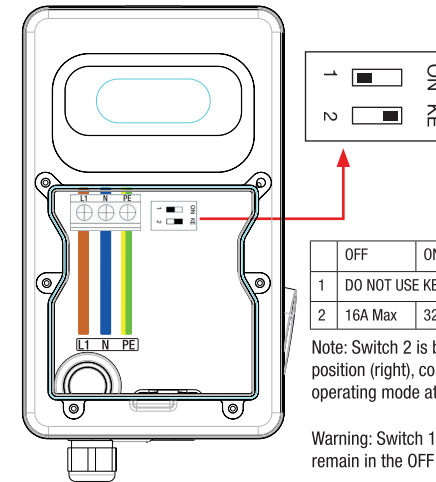


5. Open maintenance cover

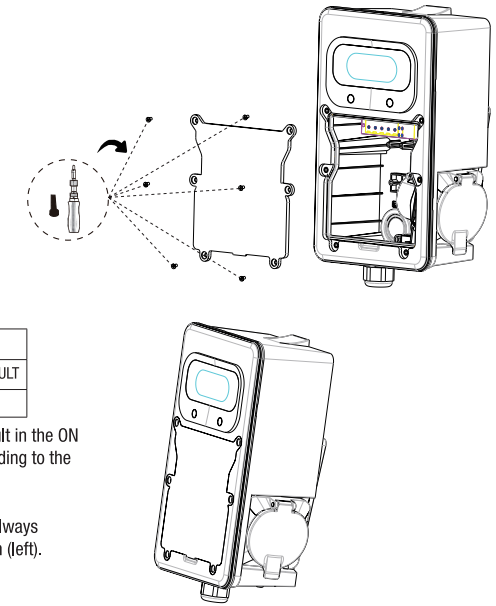


6. Wire the power cable to the terminal block. This task may only be carried out by a qualified electrician.

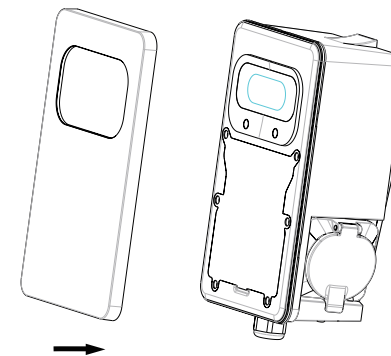
1 phase 230-240Vac connect PE/N/L



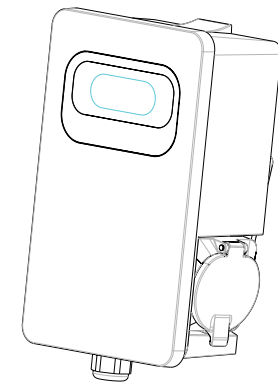
7. Secure maintenance cover



8. secure the front cover in position



9. The Charger is ready to use



CHARGING & TIMER

WARNING

- Do not disconnect the connector while charging. This may damage the connector or your vehicle's charging port.
- Never touch the power plug or connector with wet hands.
- Ensure the plug is fully inserted into the socket before charging.
- Keep the charging equipment away from water, fire, or excessive heat.
- Do not use the charger if the cable or connector is damaged.

Plug and Charge

Start Charging

- Open the cover of the charger's EV socket. Insert the EV plug of your cable securely into the socket.

- Connect the EV connector to your vehicle's charging port. Ensure your EV enters charging mode. The charging process will start automatically once the connector is properly connected.

Stop Charging

- Long-press the current setting button until the charging process stops.
- Carefully disconnect the charging cable from your vehicle and then from the charger.

Timer Function

- Press the timer button to set a charging timer. The timer increases in 1-hour increments, starting from a 1-hour countdown.
- Once the timer is set, the charger will automatically start charging after the selected countdown period. And the charger will automatically start charging after 24 hours by default.
- Long-press the timer button to reset and cancel the timer.

*The timer setting will be lost if the device is powered OFF.

USER INTERFACE INSTRUCTION



1. LCD screen

2. Timer button

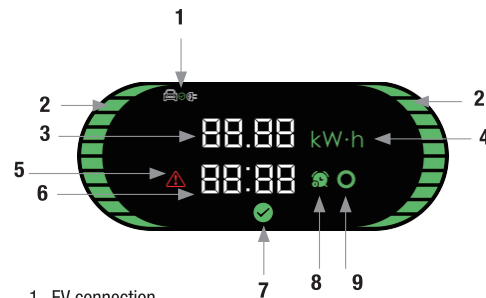
Timer adjustment increases in one hour increments, starting with a hour countdown. Support of an 24-hour cycle. Long press- reset timer.

3. Current setting button

short press to adjust charging current; Long-press to start or stop charging

4. Type 2 socket

LCD DISPLAY



- EV connection
- Status bar
- Energy, power/rated current
- Energy/Power unit
- Fault indicator
- Time or fault code
- Available indicator
- Reservation time indicator
- Waiting indicator

DISPLAY AND STATUS

Display	Status	Description
	Available	<ul style="list-style-type: none"> Not connected to EV Display rated current (A)
	Charging Ready	<ul style="list-style-type: none"> Connected to EV Display rated current (A) Display time (hh:mm)
	Charging	<ul style="list-style-type: none"> Display charging power(kW) and energy consumption (kWh) in turn Display charging time (hh:mm) The left and right status bars indicate charging
	Charging Pause	<ul style="list-style-type: none"> Display energy consumption (kWh) Display charging time (hh:mm) Display a waiting indicator
	Charging Ended	<ul style="list-style-type: none"> Display energy consumption (kWh) Display charging time (hh:mm)
	Scheduled Charging	<ul style="list-style-type: none"> Display the scheduled time (hh:mm)
	Fault or Unavailable	<ul style="list-style-type: none"> Display fault code. Refer to Troubleshooting for error information.

TROUBLE SHOOTING

Error code	Error Description	Description
1	Leakage	<ul style="list-style-type: none"> Disconnect the leakage/over-current protection, switch OFF the Charger immediately Check whether the charger's output cable is damaged or has low-impedance ground or short circuit After troubleshooting the above problems, power on the charger again. If the problem still exists, contact customer support
2	Over current	<ul style="list-style-type: none"> Check whether the charging connector is correctly connected. Check whether the OBC (On-board Charger) is normal
3	Ground fault	<ul style="list-style-type: none"> The charger is not grounded. Check the input power cable. In case of a single live wire, make sure that the L and N wires are not wired in reverse.
4	Over voltage or under voltage	<ul style="list-style-type: none"> Check whether the input cable is properly connected Check whether the voltage on the power input is too high or not sufficient. If yes, contact local power grid company
5	Relay welding or breaking	<ul style="list-style-type: none"> Power off and restart the charger. If the problem still exist, contact customer support
6	Abnormal CP (Control Pilot)	<ul style="list-style-type: none"> Check the charging connector and charging socket of your EV Disconnect and reconnect the charging connector
7	Electronic lock fault	<ul style="list-style-type: none"> Check that the electronic lock connection is reliable
8	Over temperature	<ul style="list-style-type: none"> The ambient temperature is too high. Please keep it below 50 temperature degrees Celsius
9	Emergency stop	<ul style="list-style-type: none"> Check that the emergency stop switch is pressed(Optional)
10	Tamper Detectede	<ul style="list-style-type: none"> Check that the charger cover is closed (Optional)
11	Energy meter communication fault	<ul style="list-style-type: none"> Check whether the communication cable of the charger meter communication is properly connected or loose Check that the baud rate of the meter is 9600(Optional)
12	Diode missing	<ul style="list-style-type: none"> No vehicle diode detected, If it is not a real car, please confirm the presence of a diode
13	DLB communication fault	<ul style="list-style-type: none"> Please check whether the RS485 communication cable is connected correctly

MAINTENANCE

To ensure long-term stable operation of the equipment, the equipment does require some basic, common sense maintenance.

The exterior maintenance can be performed by the user. All other service must be conducted by qualified personnel. It is recommended to perform a maintenance every month depending on the environment. **Please ensure the device is powered OFF before performing any maintenance.**

- To avoid accumulation of debris/dust/dirt on or around the unit, wipe surfaces with a soft cloth dampened with water, or for harder to remove marks, use an alcohol based cleaner.
- Check whether the equipment is properly grounded and safe.
- Check whether there are potential safety hazards like flammable, explosive, harsh or combustible materials around the charger. If present, contact a qualified personnel for help.
- Check for debris or damage inside or around the cable and connector. If present, contact a qualified personnel for help.
- Check for loose connections. If present, contact a qualified personnel for help.